



Weatherford®

Dipmeter Image

1:200

COMPANY	Santos & Partners				
WELL	Marmbulligan 1				
FIELD	Marmbulligan				
PROVINCE/COUNTY					
COUNTRY/STATE	Northern Territory				
LOCATION	OT Downs Basin				
Latitude	16°11'58.80" S	Other Services Focussed Electric Multichannel Sonic Acoustic Scanner	Density Neutron		
Longitude	134°46'18.80" E				
Permanent Datum , Elevation 130 metres					
Log Measured From GL					
Drilling Measured From Surface					
Date	14-SEPT-2016			Elevations: KB DF GL	metres 177.91 177.91 177.91
Run Number	1				
Service Order					
Depth Driller	674.80			metres	
Depth Logger	675.32			metres	
First Reading	675.20			metres	
Last Reading	106.80			metres	
Casing Driller	106.70			metres	
Casing Logger	106.80			metres	
Bit Size	3.875			inches	
Hole Fluid Type	KCL				
Density / Viscosity	1.08 g/c3			31.00	
PH / Fluid Loss					
Sample Source	TANKS				
Rm @ Measured Temp	0.066 @ 25.0			ohm-m	
Rmf @ Measured Temp	0.061 @ 25.0			ohm-m	
Rmc @ Measured Temp	0.099 @ 25.0			ohm-m	
Source Rmf / Rmc	CALC			CALC	
Rm @ BHT	0.041 @ 56.0			ohm-m	
Time Since Circulation	1 HRS 15 MIN				
Max Recorded Temp	56.00			deg C	
Equipment / Base	377			EMD	
Recorded By	Duncan Hinton				Nick Howlett
Witnessed By	Paul McGliveray				
STOP CIRC	12:00 14-SEPT-2016				

BOREHOLE RECORD					Last Edited: 15-SEP-2016 02:07
Bit Size inches		Depth From metres		Depth To metres	
8.500		0.00		107.70	
3.780		107.70		674.80	
CASING RECORD					
Type	Size inches	Depth From metres	Shoe Depth metres	Weight pounds/ft	
SURFACE	4.500	0.00	106.70	11.42	

REMARKS
RUN NUMBER 1 IS THE PRIMARY DEPTH REFERENCE LOG. ALL OTHER RUNS ARE CORRELATED BACK TO THIS LOG.
CUSTOMER SCALES AND INTERVALS LOGGED
RUN 1: SQD, VO4 - Tool Bridged at 109.7M - POOH and wait on wiper trip
RUN 2: DUMMY - Tool Bridged at 135.1M - POOH and wait on wiper trip
RUN 3: SQD, VO4 - TIME ON BOTTOM 13:30 / 14 SEPT 2016 - VO4/SQD - 341/433 - Calibrated 3 August 2016 - MAX TEMP ON RUN 56 DEG C

RUN 4: RR5
- TIME ON BOTTOM 17:00 / 14 SEPT 2016
- RR5 - 595 - Calibrated 5 Aug 2016

RUN 5: MS2
- TIME ON BOTTOM 19:00 / 14 SEPT 2016
- MS2 - 422
- MAX TEMP ON RUN 56 DEG C

RUN 6: DD6
- TIME ON BOTTOM 22:05 / 14 SEPT 2016
- DD6 - 733 - Calibrated 3 August 2016
- MAX TEMP ON RUN 56 DEG C

RUN 7: NN2
- TIME ON BOTTOM 01:10 / 15 SEPT 2016
- NN2 - 549 - Calibrated 3 August 2016
- MAX TEMP ON RUN 56 DEG C

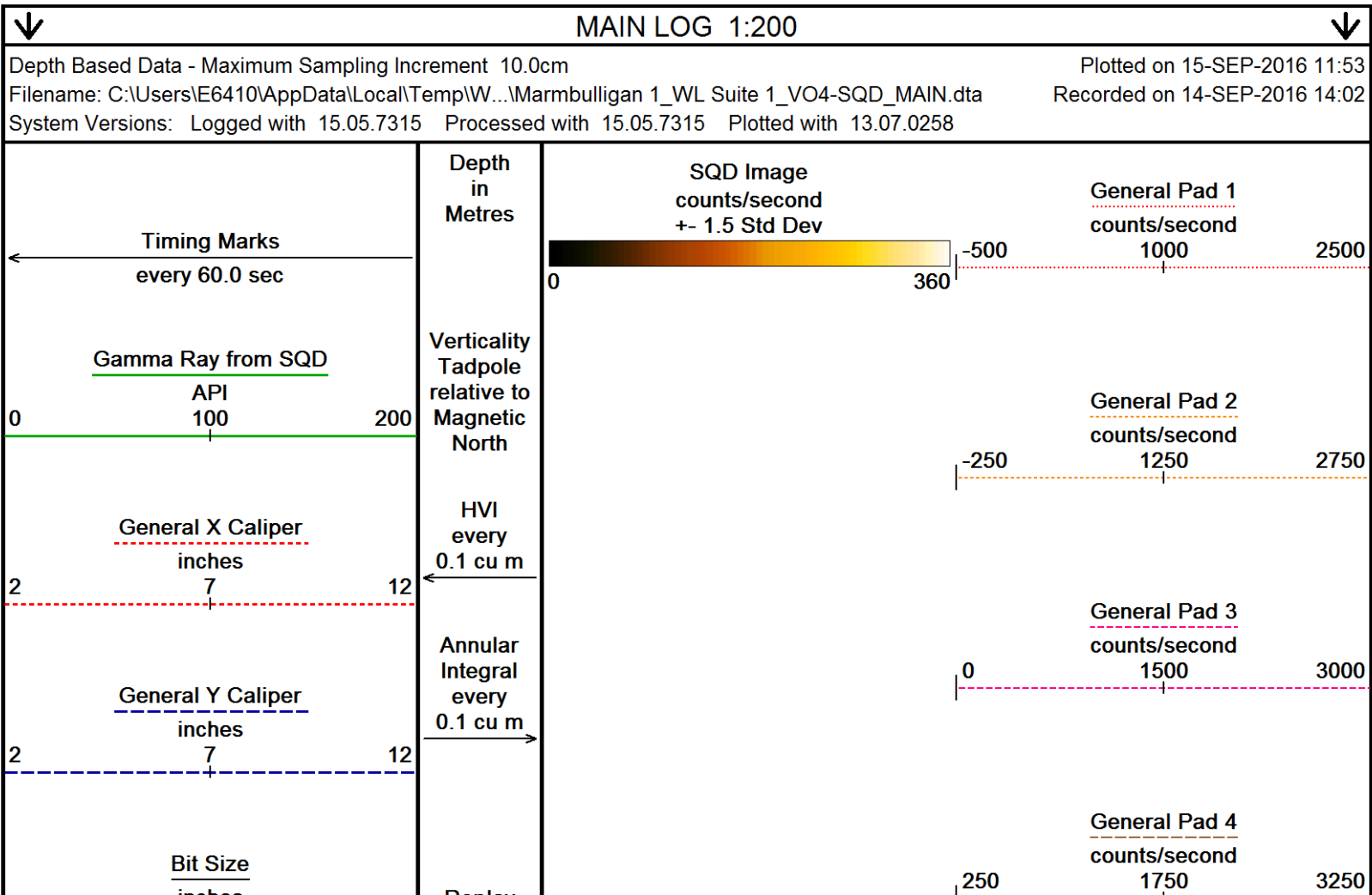
RUN 8: ATV
- TIME ON BOTTOM 04:20 / 15 SEPT 2016
- ATV - 100804

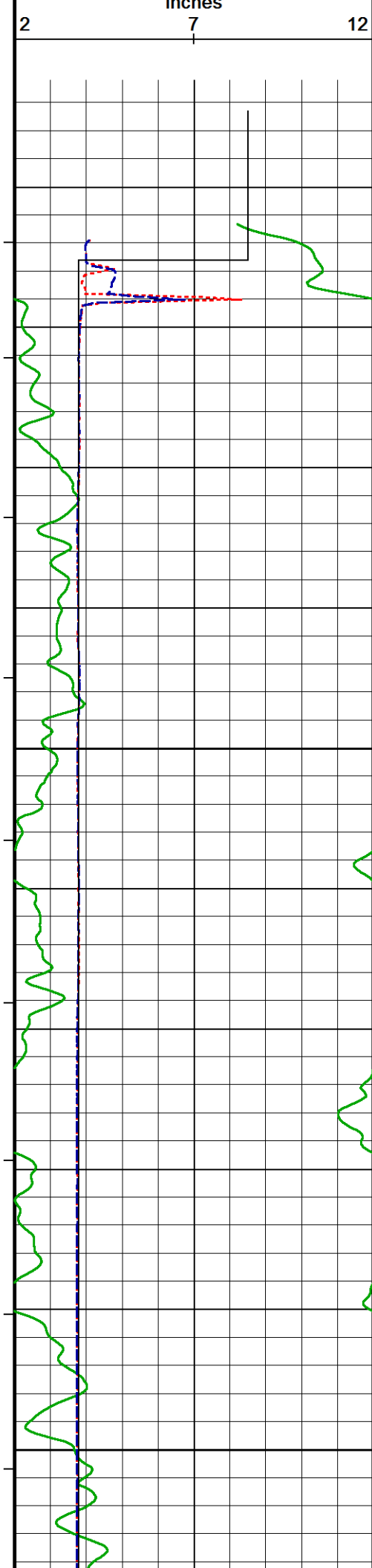
RIG: FORACO 12

NO REPEAT SECTION LOGGED AS PER CLIENT REQUIRMENT

LOGGING CREW: ENGINEER - D. HINTON; N. HOWLETT

All interpretations are opinions based on inferences from electrical or other measurements and we cannot, and do not, guarantee the accuracy or correctness of any interpretations, and we shall not, except in the case of gross or wilful negligence on our part, be liable or responsible for any loss, costs, damages or expenses incurred or sustained by anyone resulting from any interpretation made by any of our officers, agents or employees. These interpretations are also subject to our general terms and conditions in our price schedule.





Replay
Scale
1:200

102

110

1°

120

2°

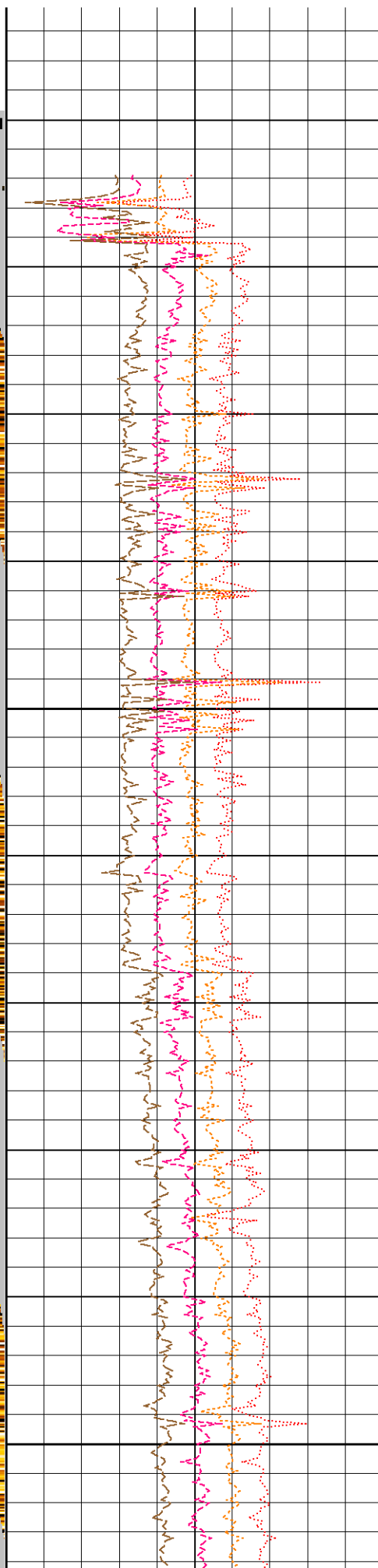
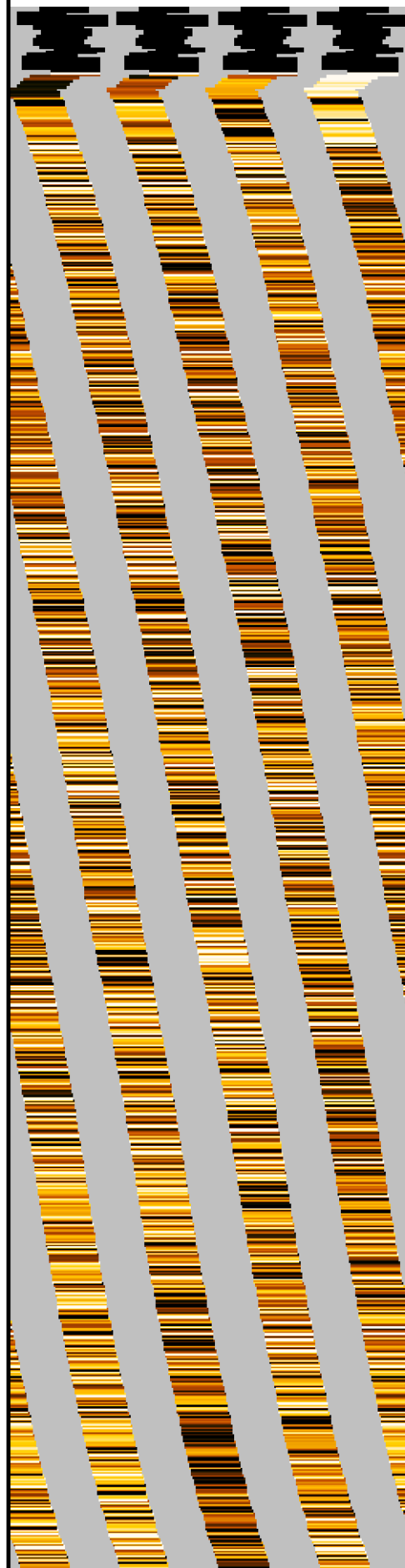
130

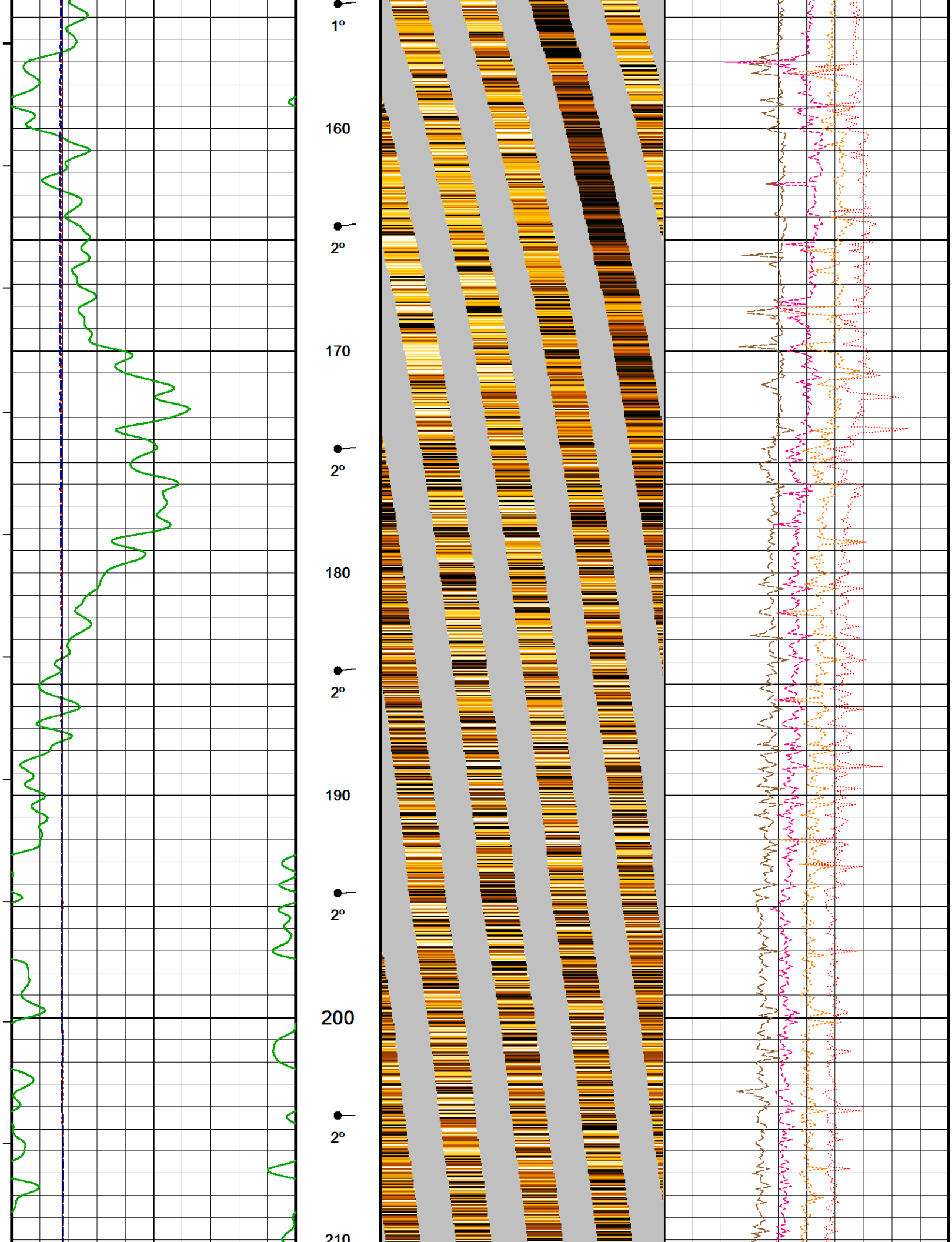
2°

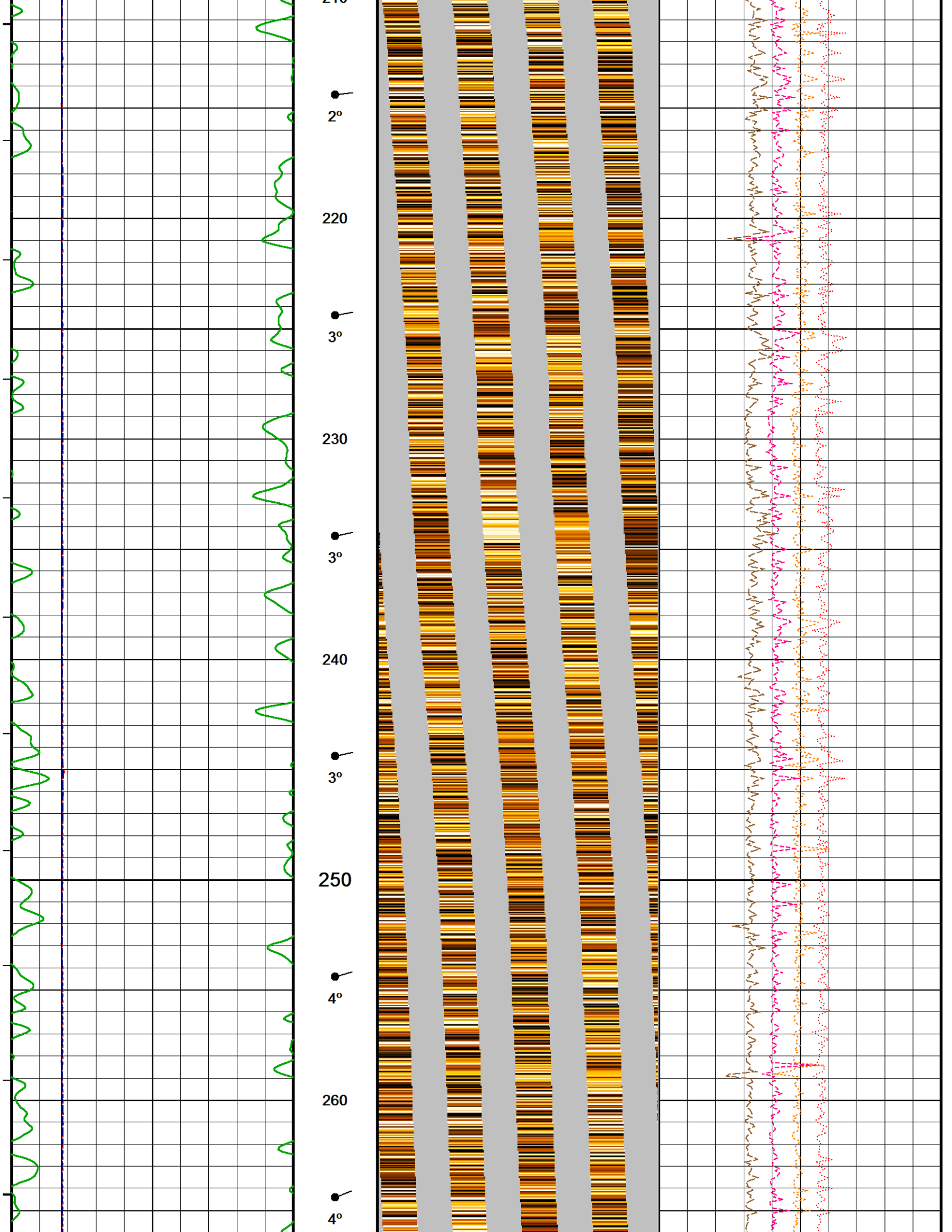
140

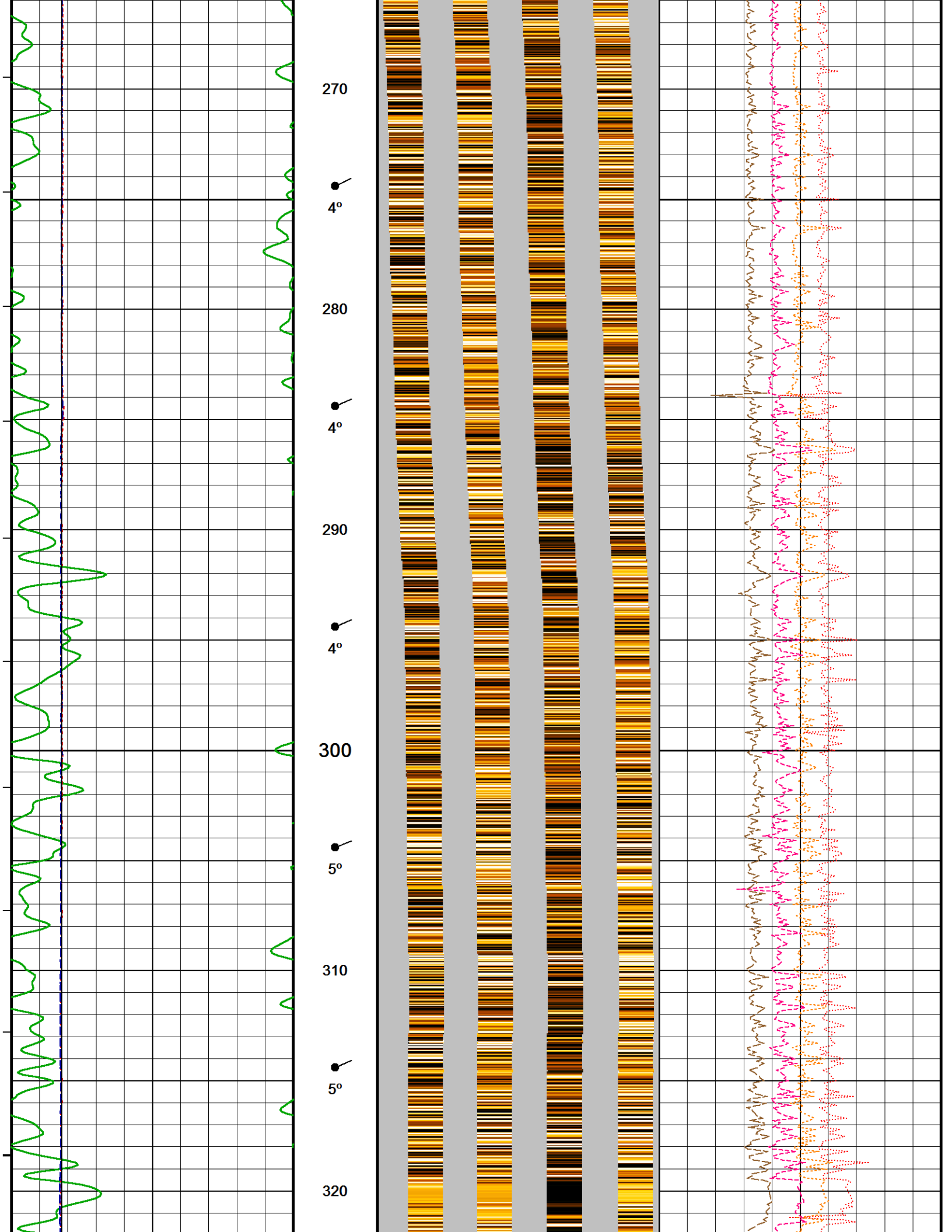
2°

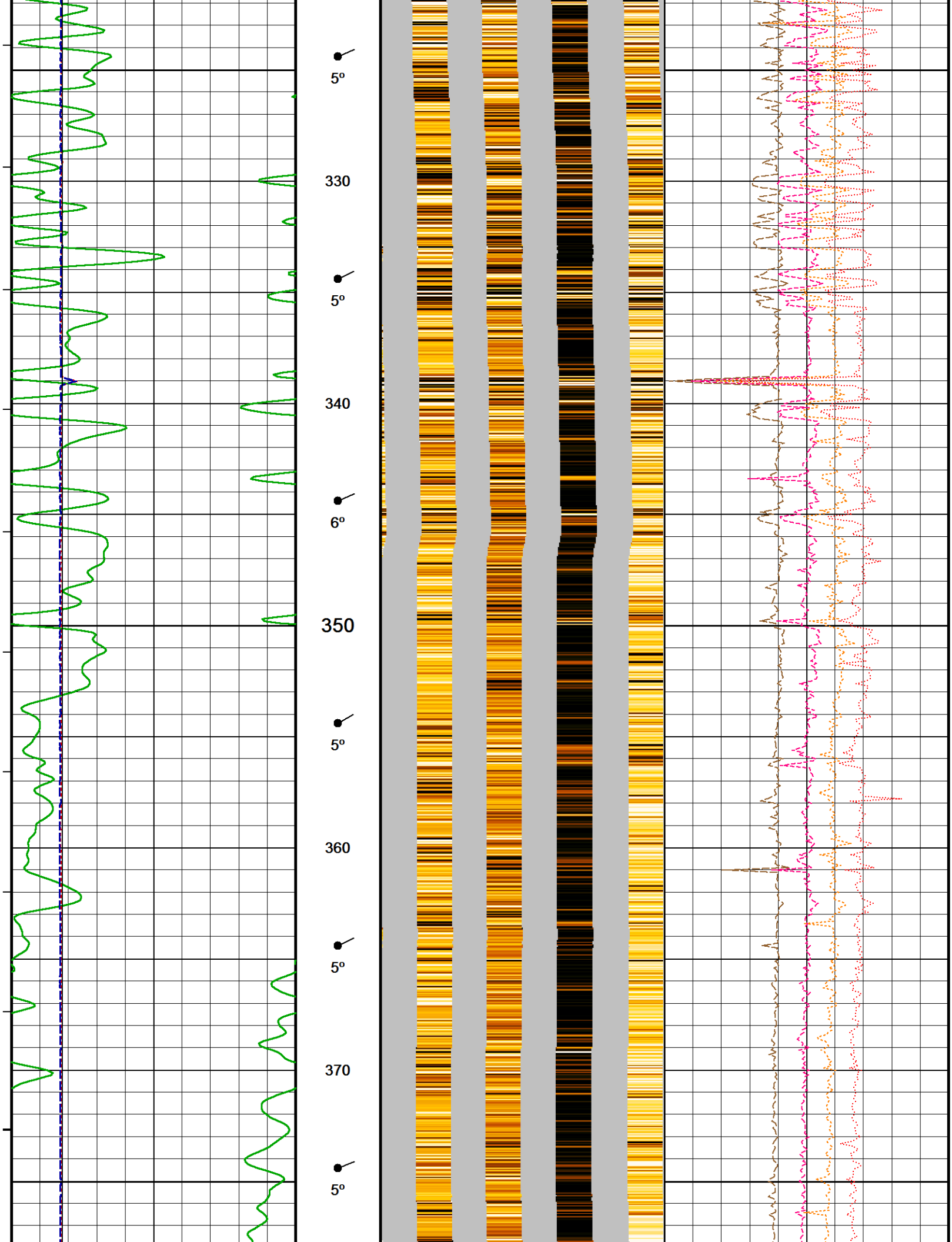
150

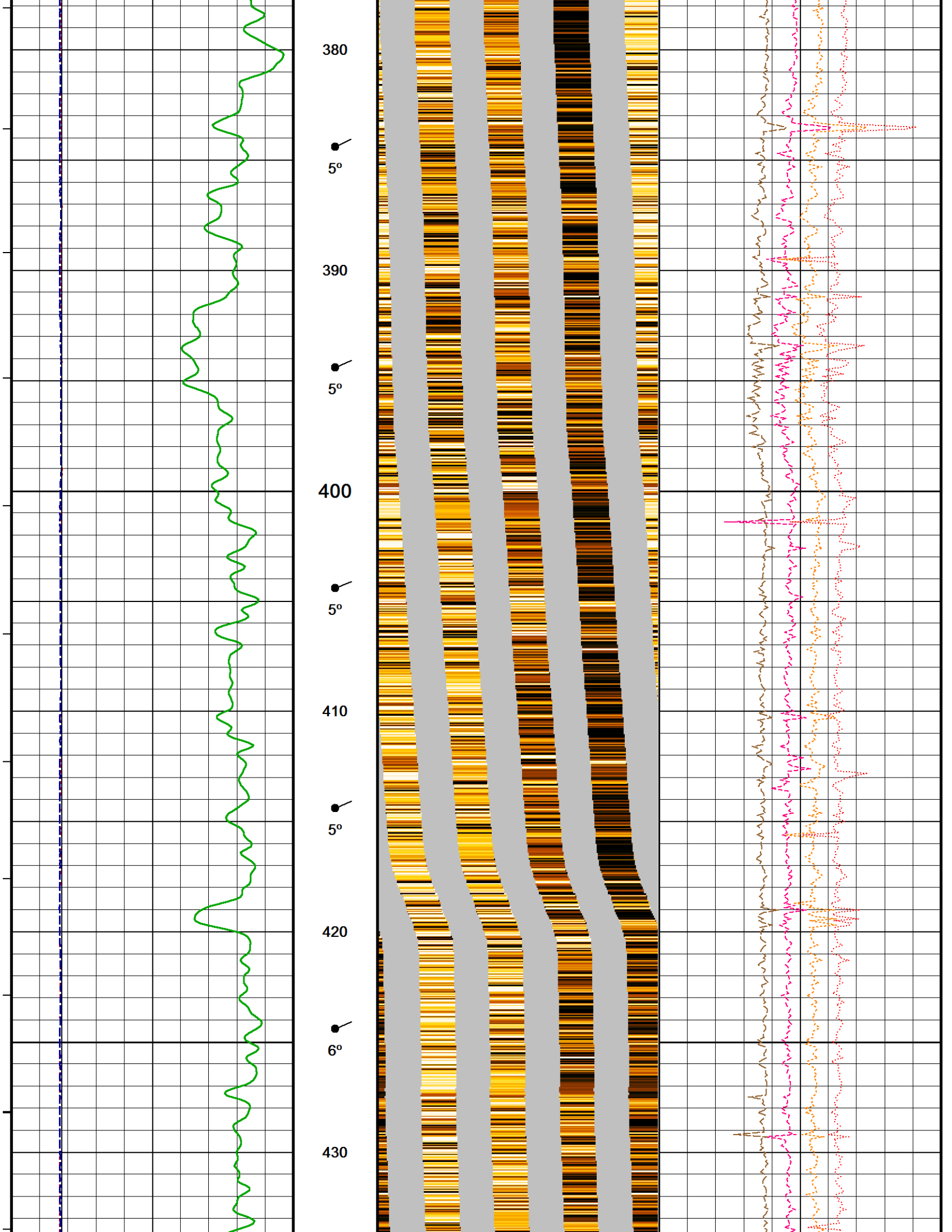


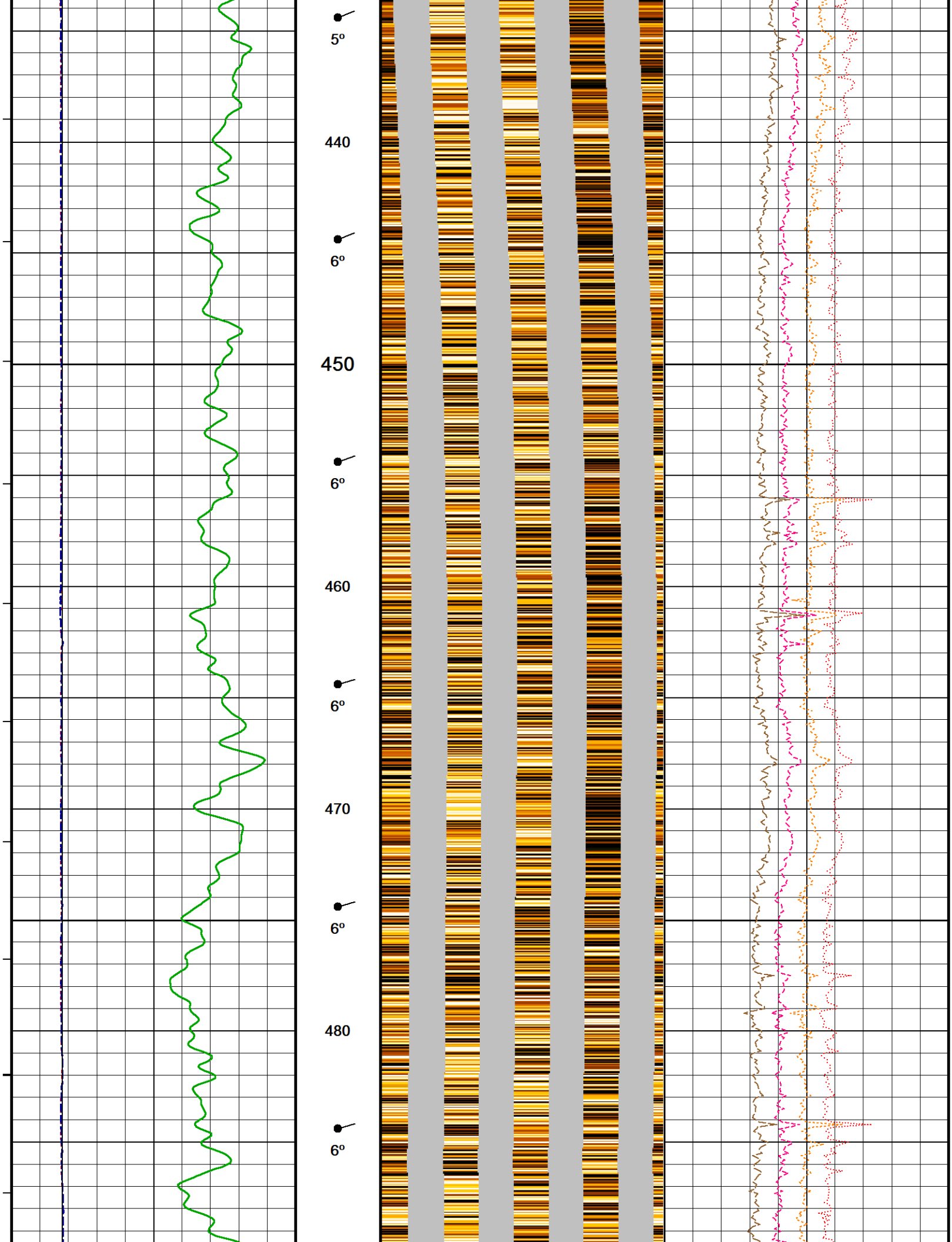


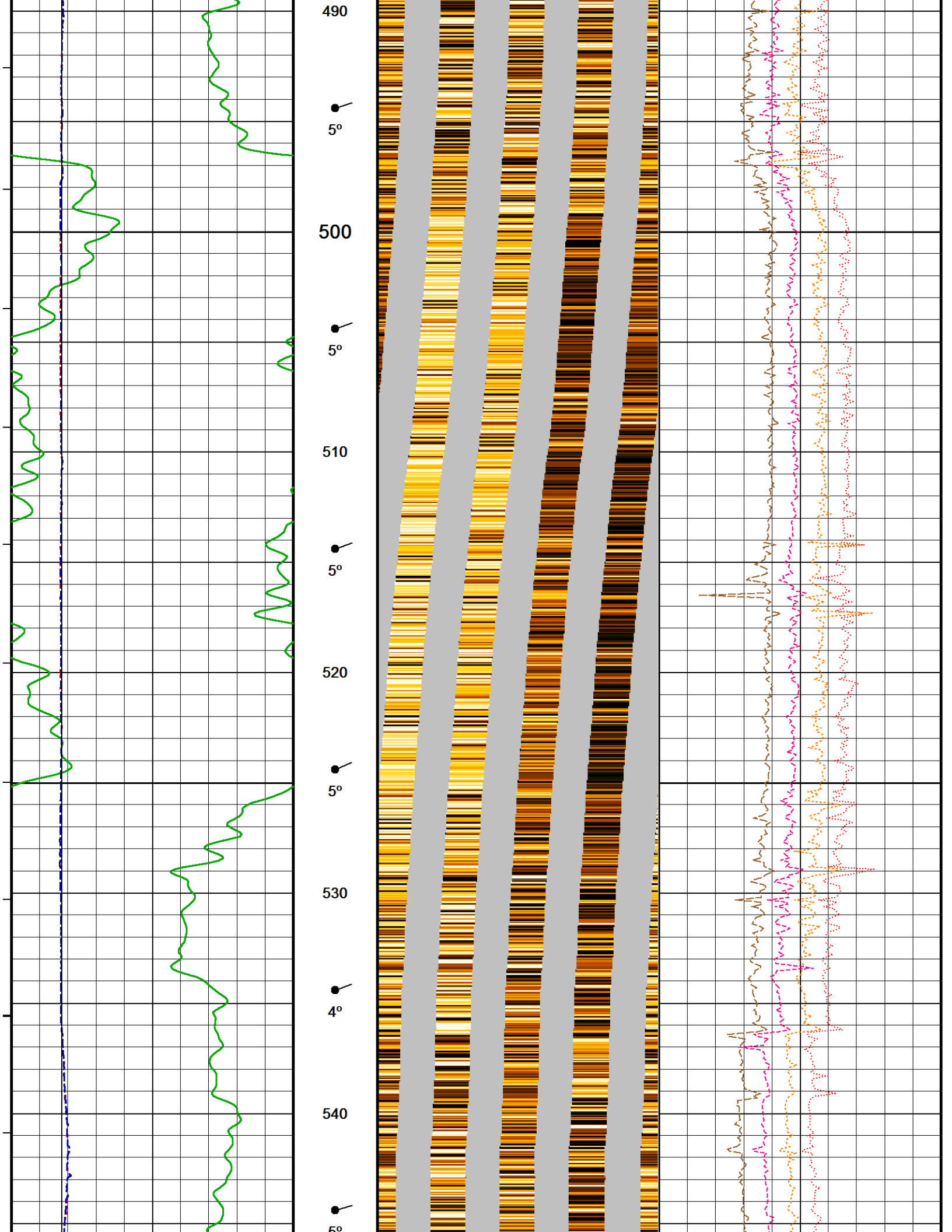


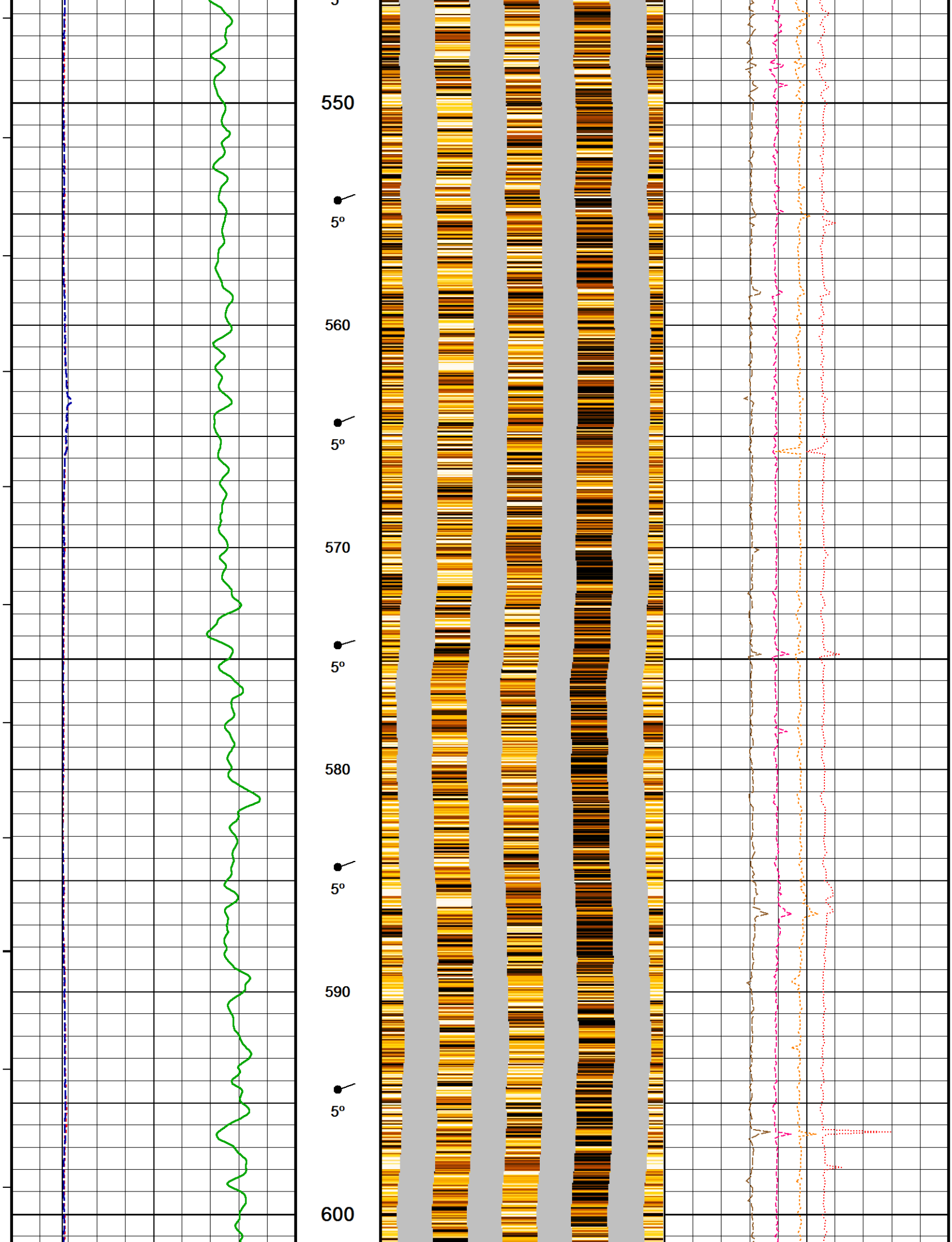


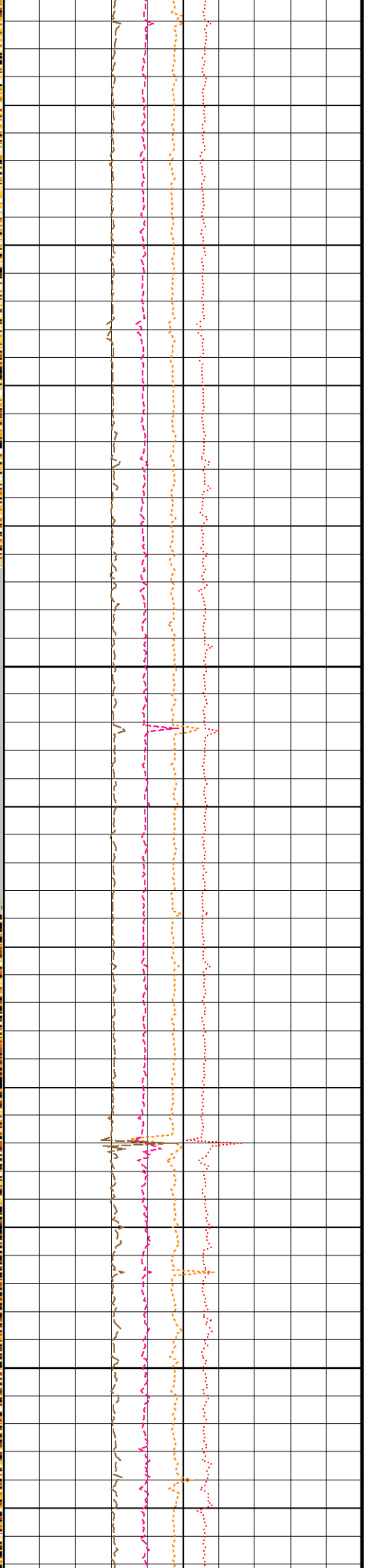
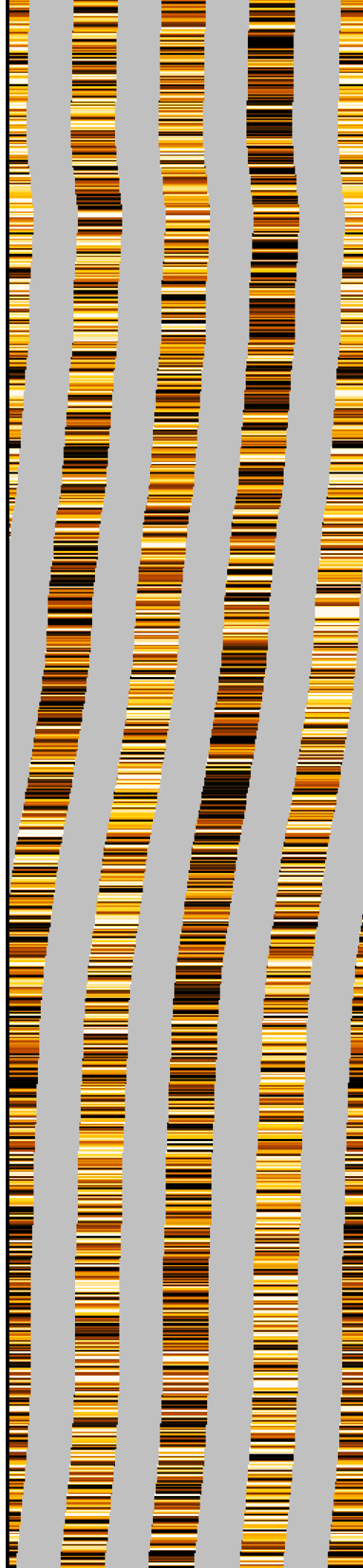
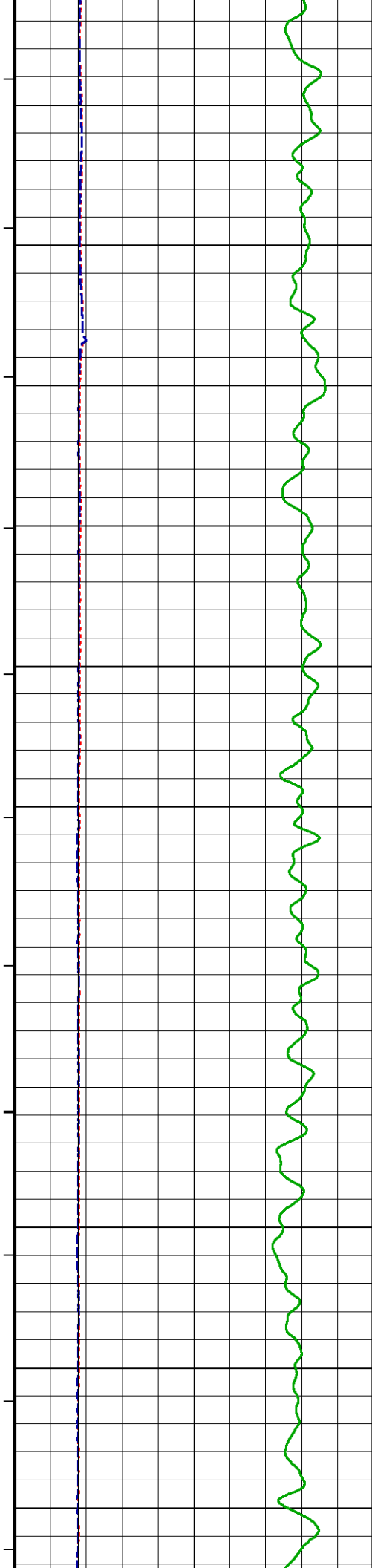


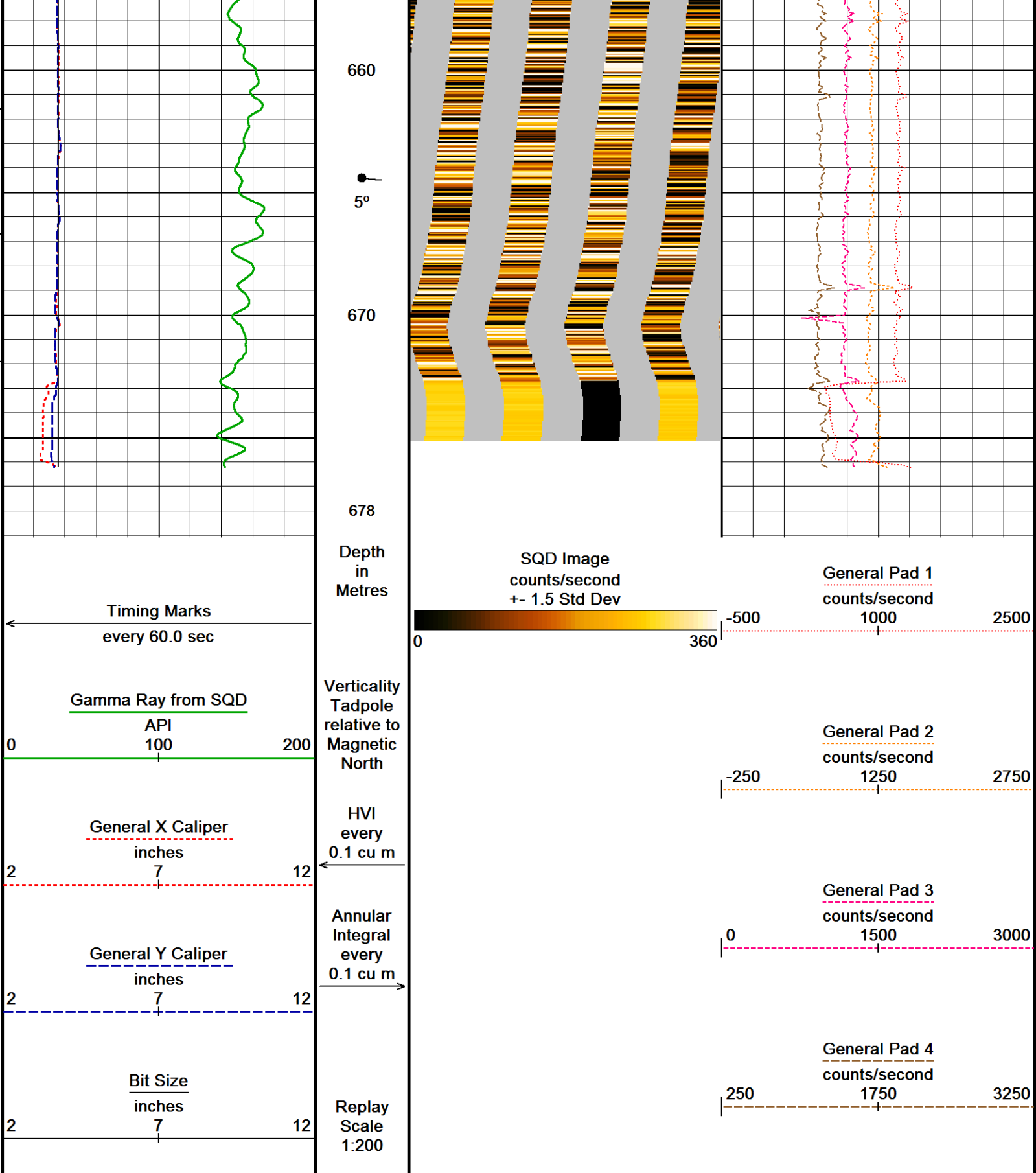












Depth Based Data - Maximum Sampling Increment 10.0cm
Filename: C:\Users\E6410\AppData\Local\Temp\W...Marmbulligan 1_WL Suite 1_VO4-SQD_MAIN.dta
System Versions: Logged with 15.05.7315 Processed with 15.05.7315 Plotted with 13.07.0258

Plotted on 15-SEP-2016 11:53
Recorded on 14-SEP-2016 14:02


MAIN LOG 1:200

BEFORE SURVEY CALIBRATION

C:\Users\E6410\AppData\Local\Temp\Weatherford PreView0\0\Marmbulligan 1_WL Suite 1_VO4-SQD_MAIN_bad.dta

General Constants All 000			Last Edited on 14-SEP-2016,13:31		
General Parameters					
Mud Resistivity	0.051		ohm-metres		
Mud Resistivity Temperature	25.000		degrees C		
Water Level	0.000		metres		
Borehole Fluid Processing	Wet Hole				
Hole/Annular Volume and Differential Caliper Parameters					
HVOL Method	Single Caliper				
HVOL Caliper 1	General X Caliper				
HVOL Caliper 2	N/A				
Annular Volume Diameter	3.000		inches		
Caliper for Differential Caliper	None				
Rwa Parameters					
Porosity used	N/A				
Resistivity used	N/A				
RWA Constant A	N/A				
RWA Constant M	N/A				
SW/APOR Tool Source					
Level Cell Calibration V04-A 312					
			Field Calibration on 13-AUG-2016,20:29		
Cell 1 Counts	Cell 2 Counts	Tilt (degrees)	Cell 1 Counts	Cell 2 Counts	Tilt (degrees)
124.00	124.00	-20.00	0.00	0.00	0.00
154.00	154.00	-10.00	0.00	0.00	0.00
180.00	180.00	0.00	0.00	0.00	0.00
205.00	205.00	10.00	0.00	0.00	0.00
235.00	235.00	20.00	0.00	0.00	0.00
0.00	0.00	0.00	0.00	0.00	0.00
0.00	0.00	0.00	0.00	0.00	0.00
0.00	0.00	0.00	0.00	0.00	0.00
0.00	0.00	0.00	0.00	0.00	0.00
0.00	0.00	0.00	0.00	0.00	0.00
0.00	0.00	0.00	0.00	0.00	0.00
Magnetometer Parameters V04-A 312					
	X Magnetometer	Y Magnetometer	Z Magnetometer		
Maximum	259.000	260.000	219.000		
Minimum	100.000	100.000	139.000		
Borehole Geometry Constants V04-A 312			Last Edited on 14-SEP-2016,05:20		
Configuration	Dipmeter				
Magnetic Declination	4.03	degrees	East		
Dipmeter Constants SQD-A 433					
			Last Edited on 22-AUG-2016,01:48		
Sonde Configuration	Dipmeter Mode				
Arm Kit	N/A				
Search Angle	45.00	degrees			
Correlation Interval	1.00	metres			
Correlation Step	0.20	metres			
Caliper used in Calculations	Yes				
Pad Curves Filter Length	1				
Dipmeter Orientation	True North				
Curve used to orient image	Azimuth of Pad 1				
Pseudo image processing	Enabled				
Gamma Calibration SQD-A 433			Field Calibration on 03-AUG-2016 14:22		
	Measured	Calibrated (API)			
Background	9	40			
Calibrator (Gross)	112	495			
Calibrator (Net)	103	455			
Gamma Constants SQD-A 433			Last Edited on		
Gamma Calibrator Number	455				
Caliper Calibration SQD-A 433			Base Calibration on 22-AUG-2016 02:08		

Base Calibration		Calibrator Size (in)		
Reading No	Measured X	Measured Y		
1	204	204	3.00	
2	343	341	4.00	
3	632	629	6.00	
4	964	956	8.00	
5	1212	1211	10.00	
6	0	0	0.00	
Reading No	Pad 1 Offset (in)	Pad 2 Offset (in)	Pad 3 Offset (in)	Pad 4 Offset (in)
1	0.0000	0.0000	0.0000	0.0000
2	0.0000	0.0000	0.0000	0.0000
3	0.0000	0.0000	0.0000	0.0000
4	0.0000	0.0000	0.0000	0.0000
5	0.0000	0.0000	0.0000	0.0000
6	0.0000	0.0000	0.0000	0.0000
Caliper Constants SQR-A 433			Last Edited on 13-AUG-2016,20:36	
Caliper Difference for BRKT		0.120	inches	

COMPANY	Santos & Partners			
WELL	Marmbulligan 1			
FIELD	Marmbulligan			
PROVINCE/COUNTY				
COUNTRY/STATE	Northern Territory			
Elevation Kelly Bushing		metres	First Reading	metres
Elevation Drill Floor	175.00	metres	Depth Driller	674.80 metres
Elevation Ground Level	175.00	metres	Depth Logger	675.32 metres
<div>  <div> Dipmeter Image 1:200 </div> </div>				